

## REFUNDS

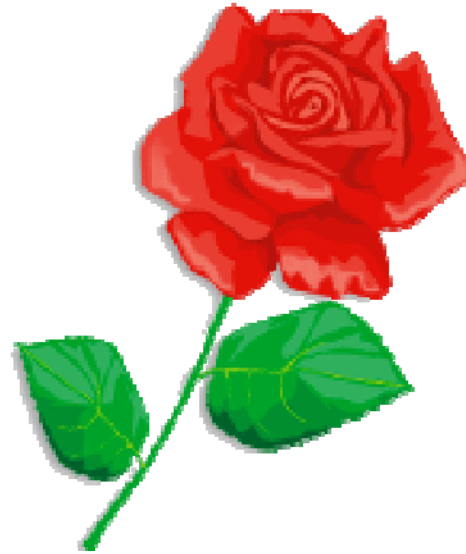
A seven day advance notice is requested when a resident is leaving our facility. Refunds are made for the remaining days in the month when the resident is officially discharged. A check is mailed after the first of the month following departure.

*\* Please note that medication bills are paid one month behind and may still be due after a patient has been discharged from the facility.*

*For further questions regarding our facility or to schedule a visit, please contact Mark Yoder, Jr or Beka at 349-4114.*

COUNTRY REST HOME

12046 Sunset Lane  
GREENWOOD DE 19950  
[www.countryresthome.com](http://www.countryresthome.com)



# COUNTRY

# REST

# HOME

*"Loving Care for the Elderly"*

12046 Sunset Lane  
Greenwood DE 19950

302-349-4114

e-mail address:  
[bekatroyer@aol.com](mailto:bekatroyer@aol.com)  
[www.countryresthome.com](http://www.countryresthome.com)

# WELCOME TO THE COUNTRY REST HOME

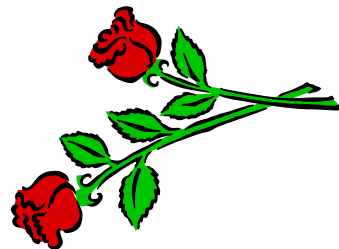
*Thank you for your interest in our facility. We hope the information enclosed in this brochure will be helpful to you in answering any questions you may have.*

*Country Rest Home* is a privately owned and operated facility fully licensed by the State of Delaware as an Intermediate Care Facility.

It is our desire to bring the best quality care possible to this community and the people we serve here. Without apology, we attempt to bring a Christian perspective to the care of our residents.

## FACILITIES AND SERVICES

- ◆ Our facility is located on 45 beautiful acres in Greenwood, Delaware.
- ◆ We offer 44 semi-private beds and 12 private beds.
- ◆ A House Doctor sees each resident every 60 days or as the need arises.
- ◆ A Registered Dietician works closely with the Dietary Manager to bring the most nutritional meals possible for each resident's dietary needs.
- ◆ PT & OT services are available through an outside agency and may qualify for insurance coverage.
- ◆ Care Plan Meetings are held every 60 days for each resident to evaluate their progress. Family members are notified in advance and are encouraged to participate in these meetings.
- ◆ Transportation to and from a consulting doctor is offered for a nominal fee.
- ◆ An Activities Director is in charge of planning activities that the residents may participate in.
- ◆ Laundry service is provided at no additional charge.
- ◆ We also provide **Respite Care** for families needing a short-term break from caring for their loved one.



## RATES

Effective July 1, 2011—December 31, 2011

Semi-private - new building. . . .	\$4825.00
Private - new building . . . . .	\$4975.00
Semi-private - old building . . . .	\$4625.00
Private - old building . . . . .	\$4775.00
Respite Care . . . . .	\$170.00/day
Admission fee* . . . . .	\$500.00

\*Payable in five monthly installments. This is a non-refundable fee.

Charges begin the day of admission and include the day of departure.

Invoices are mailed the first of each month for a month in advance and payment is due by the 15th of each month. In case a third party (i.e. insurance company) denies payment, the responsible person will become liable for the unpaid bill. A 1 1/2% finance charge is added to all unpaid bills at the end of the month.

### EXTRA CHARGES

**Medication:** Medication is delivered to the facility by Omnicare Pharmacy and is billed to each resident on the monthly invoice. Most prescription plans are accepted by the Pharmacy.

**Depends:** Depends are purchased by the facility for a reasonable price and billed to each resident who uses them. The family may also provide the depends if they do not wish to be billed for them.

**Haircuts:** Haircuts and perms are given at the facility. The charge for a haircut is \$8.00 for men and \$10.00 for women. Perms are \$35.00

**Oxygen:** There is a \$7.00 per day charge for the use of oxygen. This charge covers the distilled water and tubing needed for the machine.

**Misc. Medical Supplies:** When additional medical supplies are needed it may be necessary to bill for these items on the monthly invoice.

**Transportation:** Transportation for a consulting doctor's appointment is provided for a charge of \$40.00 in the local area and \$55.00 for a longer distance.

**Alarm Guards:** If a resident requires an alarm guard to prevent them from wandering outside there is a one-time charge of \$105.00.